

VENUS OAK

AN EXCEPTIONAL INVESTMENT

A HOME FOR YOUR FAMILY.

Venus Oak is more than an apartment; it's a statement of your aspirations. It is the place you call home for it offers comfort and elegant spaces for your family to grow.





INVEST IN
EXCEPTIONAL
LIVING



EXPAND YOUR HORIZONS.

Explore a world of spacious elegance in the lively community of Kileleshwa.

Venus Oak is an exquisite project consisting of 4 - bedroom apartments with a servant's Quarter.

LIVING AND INVESTMENT POTENTIAL.

This property offers spacious interiors that redefine family living and investment potential. With abundant space throughout, it presents an ideal opportunity for families seeking comfort and investors looking to maximize returns in a thriving market.





DESIGNED FOR GROWING
FAMILIES



A PLACE FOR
ABUNDANCE

QUALITY AESTHETICS.

Every detail of every corner has been considered to create an atmosphere of sophistication, from the finest fixtures to the floor coverings and oversized windows, providing an abundance of natural light and views of the surrounding cityscape.





SPACIOUS DESIGNS



LUXURY FINISHES

STYLE MEETS HOME.

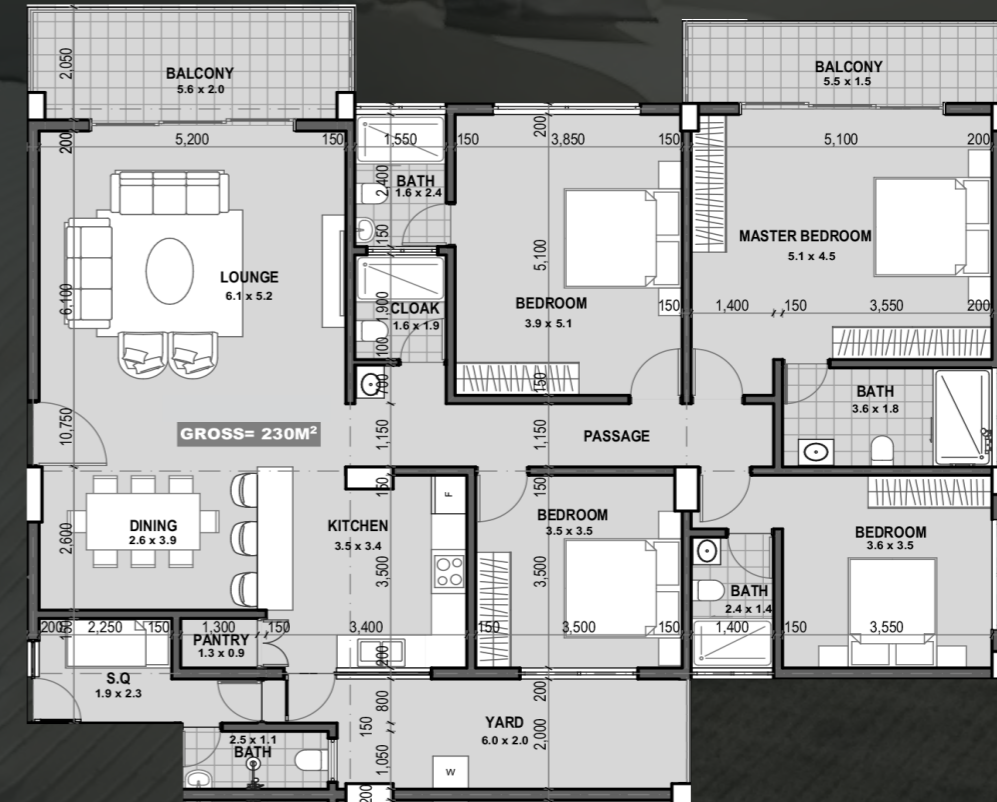
Our goal was to unify the touch of rare style and blend into a space to make it more than just a physical space, but a feel of a home. Venus Oak is where all the innovative ideas are made to life.



TYPICAL FLOOR PLAN



4 BEDROOM UNIT
230 SQM





PROJECT HIGHLIGHTS



High end interior finishes



State of the art gym



Landscaped courtyard



Intercom and access control



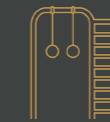
Swimming Pool



Backup generator



Borehole



Play area



Attractive payment plans

LANDSCAPED GARDENS.

Immerse yourself in nature's embrace as you explore our meticulously curated gardens. Serenity awaits amidst vibrant blooms and lush greenery, providing the perfect backdrop for moments of peace and relaxation.





POOLSIDE BLISS.

Dive into luxury at our stunning poolside oasis. With glistening waters inviting you to take a refreshing dip



RESIDENCE LOUNGE.

Step into sophistication at our exclusive residence lounge. From intimate gatherings to moments of quiet reflection, this elegantly appointed space offers the perfect setting to unwind, connect, and indulge in the finer things in life.

PLAY AREA.

Immerse yourself in nature's embrace as you explore our meticulously curated gardens. Serenity awaits amidst vibrant blooms and lush greenery, providing the perfect backdrop for moments of peace and relaxation.







FITNESS AREA.

Elevate your wellness journey in our state-of-the-art fitness area. Whether you're seeking an invigorating workout or a moment of zen, our premium facilities cater to your every fitness need, empowering you to thrive in both body and mind.



KILELESHWA

REDEFINED

Kileleshwa is renowned for its safety, green surroundings, serene environment, and well-maintained properties. We offer you a perfect blend of modern city living and the tranquility of nature with excellent amenities and easy access to the essential business hubs

1-minute drive from Valley Arcade Shopping Center.

3-minute drive to Riara School, Rusinga School, Braeburn School, and Cavina School.

3-minute drive to Lavington Mall.

5-minute drive to Junction Mall.

7-minute drive to Nairobi hospital.

10-15 drive to Upperhill and CBD.



TEAM PROFILE

DEVELOPER: STAROOT COMPANY LTD
QIANFAN COMPANY LTD

ARCHITECT: RAYPLAN ARCHITECTS

INTERIOR DESIGN

AMENITIES DESIGN

BRANDING &
MARKETING VISUALS : KARIM CG VISUALS

DEVELOPERS PREVIOUS PROJECTS

PLATINUM OAK, KILELESHA, OLOITOKITOK ROAD
SILVER OAK, KILELESHA, OTHAYA ROAD
WHITE OAK, KILELESHA, OTHAYA ROAD
BRIC APARTMENTS, ARGWINS KODHEK ROAD
STAROOT RESIDENCY, KILIMANI, WOOD AVENUE
NEPTUNE RESIDENCY, LAVINGTON, MARARO ROAD



A STARROOT EXCLUSIVE DEVELOPMENT

STARROOT
REAL ESTATE